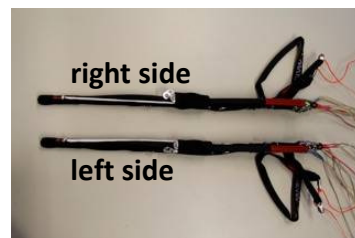


SKYWALK

P A R A G L I D E R S

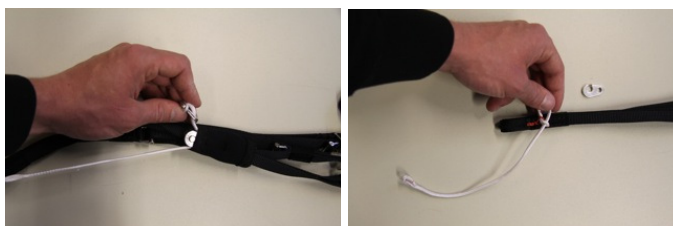
How to fix the additional accelerator pulley to the POISON3 riser

1. Take out the risers and sort out the left and the right side by looking at the brake pulleys. Both risers should face outside.

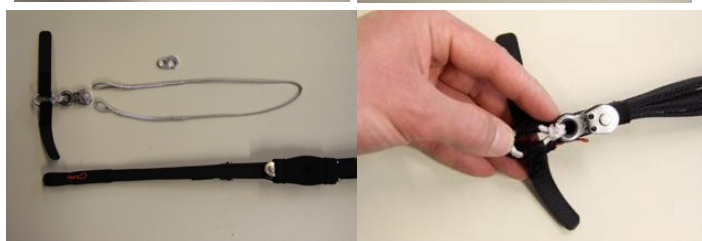


Here we start to work on the right side. You can already prepare the new accelerating line and the additional pulley that came with your wing.

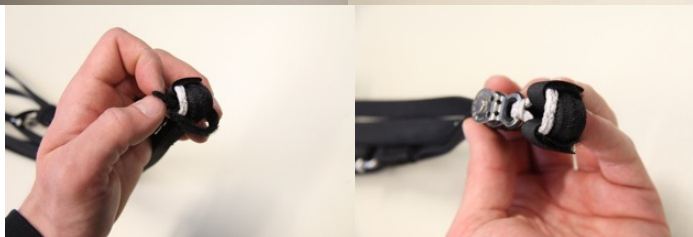
2. Remove the existing brummel hook.
3. Remove the existing accelerating line on the bottom of the riser.



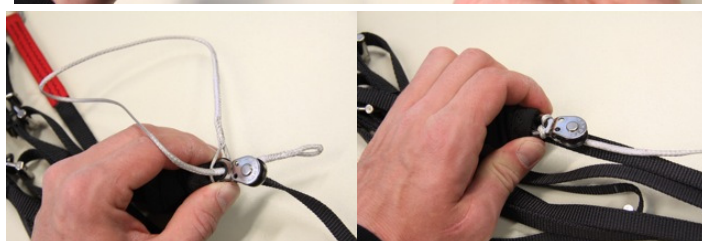
4. Now take the new pulley and hold it to the side of the riser (the same side in which the brake pulley is directing).
The soft side of the Velcro must be facing you!



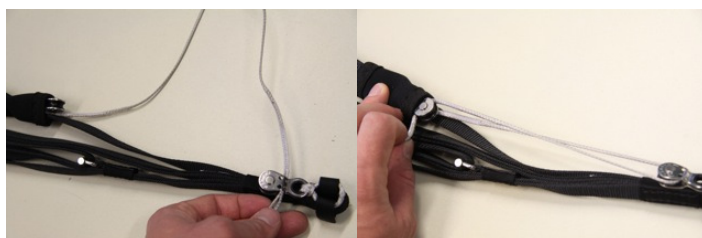
Put the Velcro through the carabiner loop of the riser and pull it tightly on both sides.



5. Now take the new accelerating line. Note the 2 different loop sizes on this line!
Take the side with the **bigger loop** and put the loop over the upper pulley of the riser. Then pull the other end through the pulley attachment hole and pull it tightly.



6. Thread the new accelerating line from the front side of the riser through the new pulley that you have just attached. Then go back up and again from the front side of the riser, through the pulley.



7. Attach the brummel hook to the end of the line (small loop) again. Ready!
8. **Important:** When you attach the riser to your harness, note that you always put the carabiner through both, **the riser- and the additional pulley loop!**

